



OCTOBER 2010

TEMPLE BETH EL

VOICE

CONGREGATIONAL SHABBAT

Saturday, October 16th, 2010

This service is for and by you, the members
of our Temple family.

(Page 3)



TBE UNIVERSITY

Fall Mini-Mester

November 3rd, 10th and 17th

(Page 6)

2010 SADIE LEVIN SCHOLAR IN RESIDENCE

November 19-20th, 2010

Featuring Jerry Davidson

(Page 10)

- 03 Rabbinic Reflections/Congreg. Shabbat
- 04 Notes from the Cantor/What's New at the U?
- 05 Mother's Circle/Leaving a Legacy/Torah Yoga
- 06 Senior Sage, Dialogues, TBE University
- 07 Social Justice & Action
- 08 S.P.I.C.E./Brotherhood/Sisterhood/Keshet
- 09 Youth/Teen Israel Exchange Program
- 10 Sadie Levin Scholar-in-Residence Shabbaton
- 11 B'nei Mitzvah
- 12 Calendar
- 14 Religious School Gold Sale/Temple Tots/CJP
- 15 Community News
- 16 Sharing Our Lives/Milestones
- 17 Funds
- 22 Transition Update/Ads

Professional Staff

Contact Us: (704) 366-1948

Judith Schindler, *Rabbi*
rabbijudy@beth-el.com

Micah Streiffer, *Rabbi*
mstreiffer@beth-el.com

Andrew Bernard, *Cantor*
cantorb@carolina.rr.com

Sara Schreibman, *Executive Director*
sshreibman@beth-el.com

Susan Jacobs, *Director of Education*
sjacobs@beth-el.com

Shari Hackman, *Membership & Outreach Director*
shackman@beth-el.com

Andy Harkavy, *Youth Director/Assistant Director of Education*
aharkavy@beth-el.com

Holly Gainsboro, *B'nei Mitzvah Coordinator*
hgainsboro@beth-el.com

Roz Cooper, *Director, Consolidated High School*
rcooper@shalomcharlotte.org

Elka Bernstein, *Director, Charlotte Jewish Preschool*

Office Staff

Debora Gluick, *Assistant to Rabbi Schindler & Rabbi Streiffer*
dgluick@beth-el.com

Jodi Werner Greenwald, *VOICE Editor & Website Coordinator*
bulletin@beth-el.com

Sue Hummel, *Program Support*
shummel@beth-el.com

Pam Linker, *Administrative Secretary*
plinker@beth-el.com

Bill Loya, *Maintenance Supervisor*
bloya@beth-el.com

Peggy McManus, *Assistant to the Cantor & the Executive Director*
pmcmanus@beth-el.com

Lori Pearson, *Food and Beverage Director*
lpearson@beth-el.com

Bettina Rappaport, *Assistant to the Director of Education*
brappaport@beth-el.com

Steve Rosenauer, *Bookkeeper*
srosenauer@beth-el.com

Denise Troutman, *Facility & Events Coordinator*
dtroutman@beth-el.com

Temple Officers

Moira Quinn Klein

President

Rick Glaser

First Vice President

Mike Yaffe

Vice President - Administration

Peter Katz

Vice President - Education

Susan Bogarad

Vice President - Planning

Steve Lepow

Vice President - Finance

Marshall Lindner

Treasurer

Jack Levinson

Recording Secretary

Adam Bernstein

Immediate Past President

Norm Levin

Honorary Life President

Presidential Appointee

Gene Meyers

Presidential Appointee

Renee Schreibman

Ginny Rosenberg

URJ South District, Executive Board

Vice-chair

Temple Office Hours

Monday through Thursday

9:00 am to 5:30 pm

Friday

9:00 am to 4:00 pm

The office is closed on Saturday and Sunday.

October 2010 Volume 22 Issue 1

Temple Beth El Voice
5101 Providence Road
Charlotte, NC 28226
704-366-1948
Fax: 704-366-1365
E-Mail: bulletin@beth-el.com

The Temple Beth El Voice is published on the first of every other month by Temple Beth El, a Reform Congregation affiliated with the Union for Reform Judaism.

All articles should be submitted the first of the month prior to the month being published. We reserve the right to edit for length and consistent editorial tone.

The Voice is published 6 times a year.



SEND YOUR KIDS TO JEWISH CAMP, FOR GOD'S SAKE (AND FOR THEIR SAKE)

By Rabbi Micah Streiffer

This summer, Rabbi Judy, Andy Harkavy and I each took some time to visit the dozen-or-so Beth

El kids at Camp Coleman, our regional Reform Jewish sleep-away camp. Here's what we saw:

- Sports, swimming, art, canoeing, hiking, tubing and more.
- The "blob" – a puffy thing that you jump onto and get thrown into the lake. (Neither rabbi has yet worked up the nerve to try it.)
- Highly competitive Maccabiah games (color wars).
- Jewish young adults (including our own Andrew London and Eva Yaffe) serving as counselors and as role models for their campers.
- Kids using Hebrew words effortlessly: "Hey Rabbi, meet us at the Chadar Ochel next to the Mirpa'ah. The mishlachta is leading tarbut. Sababa!" (Translation: "Hey Rabbi, meet us at the Dining Hall next to the Infirmary. The Israeli Delegation is leading a culture activity. See ya!")
- Campers singing along in services to the music of Debbie Friedman, Dan Nichols, Bob Marley, Phish... and the traditional prayers.
- Jewish young people building a strong Jewish identity, without even knowing it!

Jewish camping is essential to the strength of our Jewish community, because camp is uniquely suited to build Jewish identity. A recent study by the Avi Chai Foundation found that two thirds of today's young Jewish leaders have attended Jewish summer camp sometime in their life. Kids who grow up at camp feel more connected to the Jewish community and to Israel; they are more likely to join synagogues later in life and to raise their children as Jews.

Sending a child to Jewish camp is one of the most important things you can do to build the Jewish future. If you have a child, it's time to start thinking about it now – applications come out in October! Visit <http://coleman.urjcamps.org/register> to make sure that you receive one in the mail. If you're debating whether or not Jewish camp is right for your child(ren), please contact Rabbi Judy, Andy Harkavy or myself, and we'll be happy to talk it over with you. Or join us on October 25th or 27th for the last half hour of Hebrew school, when we'll show the camp video and talk about the incredible experiences your child(ren) can have there.

If you don't have kids at home, you can still make a difference. Consider a donation to Camp Coleman, or to the Cojac

Mintz Summer Camp Fund, which helps send Beth El kids to Jewish camp. Thanks for helping build the next generation!

L'shalom,
Rabbi Micah

CONGREGATIONAL SHABBAT - SOMETHING FOR EVERYONE - SATURDAY, OCT. 16TH

Come to one component or stay for it all

9:00 am – Shabbat morning experiences:

- "Ancestors on the Couch: An Analysis of the Functional and Dysfunctional Relationships in our Torah" With Rabbi Judy and Dr. Robert Abramowitz, a Charlotte psychologist and Beth El member who has been working with individuals and families for more than twenty-five years.
- FIJI Conversion Class
- Teen Band and Vocal Ensemble with Cantor Bernard
- The Robyn Farber Leadership Program will also meet at this time

10:15 am - Shabbat morning brunch with Chef Lori Pearson

11:00 am - Congregational Service

This service is for and by you, the members of our Temple family. This month, the D'var Torah will be presented by Besty Olinger. The Torah will be read by Barbara Feld, Amy Montoni and Renie Fernbach. The haftarah will be chanted by Andy Harkavy. We will invite for separate aliyot our High Holiday Ushers, High Holiday Choir and Debra Ferry with our Ritual Committee. There are lots of opportunities for participation; if you want an honor in the service just let the clergy know.



RESOLUTIONS

by Cantor Andrew Bernard

Like many of you, I spent much of the past month thinking about new year's resolutions. For years, I found this a great time to think about things I'd like to do or not do in the coming year. But after years of making well-reasoned resolutions — only to find that they were nearly impossible to incorporate into my daily life — I set aside the practice as, at best, futile; and worse, just one more disappointment to feel guilty about.

But at the same time, I haven't been able to banish the notion that this is an important opportunity to try to gain control over (or at least attempt a course correction on) things that make my life seem unsettled. I am reminded that striving for shalom means addressing areas which, personally, do not feel whole or complete. Dis-ease — those things that just don't feel right — should probably nudge me in the direction of seeking solutions or taking action.

While I'm pretty good at reflecting on my life and being honest with myself about things that need tackling, finding effective and lasting ways to implement changes has been a more elusive challenge. Trying to do more of this or eat less of that (the pretty standard resolutions) are certainly good ideas. But making them last?

As an avid lap-swimmer, I'm amused each January to see the number of new people in the pool during the first weeks of the new, secular year. (I'm less amused when they clog up my swimming lane — but that's another issue.) Each year, the influx is entirely predictable, as is the day on which the majority of them give up. (That, by the way, would be the day after the Martin Luther King holiday: the first day that interrupts — and finishes off — the new routine.) My daily swims are internally motivated — I feel physically ill if I miss a day. Their swims are externally imposed: swimming seems like a good idea, so the people drag themselves into the water whether they enjoy it or not. This year I began wondering if there isn't something to be learned from this experience.

Perhaps I could take my experience, training and theology and explore a new approach to healing those things that feel internally broken. My experience as a swimmer tells me that change will truly succeed if it is internally motivated. My training as a chaplain teaches me that "being" is often more effective than "doing." And my theology reminds me that the concepts of "breath" and "spirit"

are intertwined. These should come together naturally, since being aware of my breath is fundamental to me as a singer and as a swimmer. When I find myself out of sorts, perhaps taking a breath and looking inward could lead to a path of wholeness.

In one of the interpretive prayers of our siddur, we declare to God: "You are the still, clear voice within us. Therefore, O God, when doubt troubles us, when anxiety makes us tremble, and pain clouds the mind, we look inward for the answer to our prayers. There may we find You, and there find courage, insight, and endurance."

To breathe. To hear the voice within. To seek the strength within. Might the pathway to wholeness be buried within that soul God gave to us? Perhaps the answer is already there inside me. My new year's resolution is to stop and take a breath when I feel agitated or unsettled, and see what happens. I don't know how successful it will be — but so far, so good.

TEEN BAND AND TEEN VOCAL ENSEMBLE

Teen Band and Teen Vocal Ensemble begin this month with Congregational Shabbat. Interested? Contact Cantor Bernard at CantorB@carolina.rr.com.

WHAT'S NEW AT THE "U"?

URJ North American Forum

Three Exciting Days of Learning and Networking

Hosted by the URJ South District

November 19-21, 2010 • Atlanta, GA

THE MOTHER'S CIRCLE 2010-11



Temple Beth El continues its commitment to interfaith families by offering The Mother's Circle, a program from the Jewish Outreach Institute. Non-Jewish mothers, who have chosen to raise their children Jewish, will come together to learn about Judaism - holidays, traditions - while also finding support and friendship. Temple Beth El is fortunate to have Faylinda Lindner, a certified Outreach Fellow, who will continue to facilitate the Mother's Circle again this year.

Honoring the non-Jewish spouse is a major initiative in the Union for Reform Judaism. Temple Beth El, in partnership with the LJCC, is proud to support this initiative by offering this special program. These women and others, including non-Jewish husbands, give our community the priceless gift of future Jewish generations.

Class will begin in October and meet twice a month through May. There is a nominal book fee for the class, babysitting is provided for free and a minimum of 12 participants is required. If you are a mother raising Jewish children, but are not Jewish yourself, this course is for you.

For more information on the Mother's Circle, please contact Shari Hackman at shackman@beth-el.com or 704-749-3051, or Faylinda Lindner at faylindal@hotmail.com or 704-708-9961.

CREATING YOUR LEGACY

The upcoming year should be an exciting one for Temple Beth El, as we return to our newly expanded and refurbished Temple. As exciting as that thought may be to most of us, it is equally important that our Temple leadership is looking toward how to position Temple Beth El to serve not only the needs over the next few years for our current congregation, but at the same time look to create a legacy for future generations of congregants. With this in mind the Temple leadership will begin to challenge themselves and the congregation to create their own Temple Beth El Legacies.

"As I think about my vision for Temple Beth El, I first think of services we need to provide for our Temple membership for the next couple of years," said congregation President Moira Quinn Klein in her recent BLOG. It is also my responsibility and that of the Temple leadership to always look toward the future. With that in mind it is apparent that we must commit ourselves to building the Temple's Endowment to serve as our investment in Temple Beth El's future. We will be working closely with the Foundation for the Charlotte Jewish Community to meet with the congregants and ask them to share with us their dreams for Temple Beth El. As we explore ways that each of us can be of help now and in the future, I ask ---What is your Legacy?"

"My husband, Robert and I have made a commitment to include Temple Beth El in our estate plan. We have been joined by many others. I know that our next President, Rick Glaser, has made the same commitment as well as Past President Adam Bernstein. You see, there is a philanthropist in each of us. Our Endowment Committee will be working with the Temple Board to provide information on how each of us can help to serve the financial future of our Temple."

As co-chair of the Endowment Committee with Marcy Dumas, it is exciting to hear this commitment from our Temple Leadership. You will begin seeing regular articles in our Temple publications on how each of us can leave a legacy of our own. My wife Diggie and I, as well as Marcy and Fred Dumas have made commitments of our own. We will share stories of other congregants who have done the same, and look forward to having the opportunity to sit down with many of you to help you create a Legacy of your own.

Sincerely,
Lee G. Pesakoff
Endowment Co-Chair

TORAH YOGA

Fridays, October 8th - December 10th*
10:15 am to 11:30 am in the Swimmer Family
Aerobics Center
***Please note, no session on November 26th.**

Rabbi Judy Schindler and RYT certified yoga instructor, Shelley Bear, are offering this wonderful class. Prepare for Shabbat with your bodies, minds and souls. The price is \$50 for a 10-week session, or weekly drop-in fee of \$7.50 per class. Registration is available through the LJCC customer service desk.

FOURTH ANNUAL SENIOR SAGE CLASS TO FOCUS ON ADVOCATING FOR ISRAEL

SPICE is pleased to present this year's Senior Sage Class entitled, "Israel: The Enigma." The class will meet on the fourth Monday of each month from Noon to 1:30 pm. Presenters will include our clergy and community experts. The series will feature lectures and facilitated discussions as well as organized study groups.

The class will provide you with the knowledge you need to advocate in support of our homeland. The topics will range from exploring Israel's historic claim to the land to early Zionism to the wars and conflicts that transformed Israel's landscape. We will explore the Israeli/Palestinian conflict from early Zionism to today. During the course of the class, we will celebrate Israel's 63rd birthday and include predictions for her future.

The class will begin on October 25th and run through May. The cost of the course is \$36/person (members), \$45 (non-members). To register, call the RSVP line at 704-749-3070 or go to <http://www.beth-el.com/rsvp.html>.

DIALOGUES

Temple Beth El/ Myers Park Baptist Church Dialogue "Health Care For All"

Our TBE/MPBC Dialogue Committee invites you to a presentation and dialogue on "Health Care For All," Wednesday, October 13, 2010, at Myers Park Baptist Church at 7:00 pm. Margaret Flowers, MD, member of Physicians for a National Health Program (PNHP) will be the presenter. Dr. Flowers is a pediatrician and Congregational Fellow of PNHP, and has traveled nationally as a physician advocate for national health insurance. The program is sponsored by MPBC, TBE and the League of Women Voters.

Prior to the event, at 6:00 pm, there will be a dinner at Myers Park Baptist Church for Beth El and Myers Park members. Please RSVP to 704-334-7232 ext. 56 by October 8th and mention the event and number attending. The cost is \$7.00/person.

Temple Beth El/St. Peter's Catholic Dialogue

The Temple Beth El/St. Peter's Catholic Dialogue will meet on October 3rd in Luski Hall at 5:00 pm. We will open our series on Life Cycle Events with an examination of circumcision, baptism and babynaming. Please bring your own sandwich and a dessert or side dish to share. Coffee will be provided. For details, call 704-362-2724 or 704-365-3313.

TEMPLE BETH EL UNIVERSITY



Say not, when I have leisure I will study; for you may never have leisure

Pirkei Avot 2:4

Summer has ended. School has started. For many, that means life has become a bit more structured and probably a good bit busier as well. We rush about, carpooling the kids, doing our own work and taking care of the family. Where will the leisure hours for ourselves come from?

Let Temple Beth El University provide an energizing shot of 'me-time' in small, doable increments of 2-hour intervals for three weeks. Join other like-minded adults in participating in our long-standing tradition of Jewish study. Classes offer the opportunity for you to be challenged, engaged, enlightened and entertained. Meet new friends, share ideas, opinions and a nosh.

Our fall mini-mester will be on Wednesday nights, November 3rd, 10th and 17th in the Blumenthal Education Building. Topics include:

- 7:00 pm – 9:00 pm – Comparative Judaism & Today's Top Concerns – led by Rabbi Judy, Rabbi Yossi Groner and Jewish Educator Barbara Ezring
- 7:00 pm – 8:00 pm – What Do I Say: Jewish Responses to Anti-Semitism and Anti-Zionism and Anti-Israeli Rhetoric – featuring Dr. Racelle Weiman and Andrew Bernstein
- 8:00 pm – 9:00 pm – Jewish Folklore – with special guest instructor Sara Bryan

Affordable classes begin at \$18.00. Register online, call the office or just show up! For more information, look for Temple Beth El University at www.beth-el.com, or email info@beth-el.com. We'll see you there!

DONATE ITEMS TO THE MEN'S SHELTER OF CHARLOTTE

Please contact Merle Gottheim at tarheelmom@carolina.rr.com to arrange drop-off of the following items: bath towels, any size bar soaps, cocoa butter skin cream/lotion, men's deodorant, shaving supplies, ear plugs, foot powder (not spray), toothbrush/paste, laundry bags or backpacks, hand sanitizer, new men's socks, new men's boxers/briefs (L-5XL) and severe weather alert radios.

LEARN ABOUT THE AFFORDABLE HOUSING BOND ISSUE

On November 2nd citizens of the City of Charlotte will vote on a \$15 million bond issue to provide affordable and well-maintained housing for low and moderate income families. As part of our observance of the recent holiday of Sukkot when the Jewish people were homeless in the desert, congregants are encouraged to educate themselves about this ballot initiative. Visit www.beth-el.com/affordablehousing for more information. To volunteer for the Temple's affordable housing committee, contact Judy Seldin-Cohen at judyseldin@yahoo.com.

STERLING ELEMENTARY SCHOOL

Did you know that you can link your Harris-Teeter VIC Card to as many as four schools? In addition to supporting TBE Religious School (#3611), you can also link to Sterling Elementary School (#3011) and help both schools every time you shop.

More than 20 new and returning volunteers at Sterling Elementary School are meeting for a "Launch Lunch" this month, thanks to a Souls of White Folk grant from Mecklenburg Ministries. Our goal is to find 7 more volunteers and help in every classroom. Contact Lisa Garfinkle, slgarfinkle@windstream.net, to get involved.

Donate your gently used children's books (suitable for grades K-5) to Sterling Elementary and help start a child's home library. Email Frances Liss to make arrangements for Temple dropoff (reliss@comporium.net).

MEALS FOR THE HOMELESS

Temple Beth El is providing meals for families sleeping at Park Road Baptist Church October 17-24th. Don't cook? Saturday night is pizza night; if you can buy pizza, you can help! To prepare and serve dinner or provide supplies to pack bag lunches, please contact Cissy Gottlieb at gottliebsl@aol.com. These families are sheltered through Family Promise, and most are in transition into permanent housing.

NOT MY KID

Not all kids drink, but do you know how old teen drinkers are when they start drinking? The 2008 Charlotte Mecklenburg Drug Survey indicates kids who drink start at 12.7 years of age. Join us to educate parents on how to respond to this dangerous trend. Contact Shelley Friedman at FriedmanS@preventionservices.org or Marsha Lampert at mblampert@gmail.com to volunteer.

ENDING HUNGER, ONE STEP AT A TIME

Walk to create awareness and raise money to fight hunger locally and globally on Sunday, October 31st at 2:30 pm. The Charlotte CROP walk is among the largest in the U.S. with more than 5,000 walkers raising more than \$250,000 last year. Twenty-five percent of funds raised remain in Charlotte with Crisis Assistance Ministry, Loaves & Fishes and Second Harvest Food Bank. Sign up for the TBE Team at www.charlottecropwalk.org (click on "Join a Team"). For questions, contact Susan Brody at baerhealth@yahoo.com.

ANNUAL CANDLELIGHT VIGIL FOR VICTIMS OF DOMESTIC VIOLENCE

October is Domestic Violence Awareness Month. The annual Candlelight Vigil will be a memorial to those who lost their lives to domestic violence and a celebration with survivors of domestic violence. To date in 2010, 71 people in N.C. have died as a result of domestic violence. Watch for updates on the Candlelight Vigil on the TBE website and charmeck.org/DomesticViolence, or contact Susan Abroms at susan.abroms@gmail.com.

Come to Us for Help

Our Jewish community is ready to help victims of domestic abuse who find the strength to seek help: Most Charlotte Jewish clergy are now trained how to help support and protect victims of domestic abuse and their children, and 12 volunteers are now trained through the FRIENDS program to assist and advocate for victims in one-on-one relationships. For more information, visit www.shalombayit-nc.org or contact Marsha Stickler at info@shalombayit-nc.org.

TEVA TIP OF THE MONTH

Did you know that you can wash disposable plastic plates and silverware on a light or china cycle in the dishwasher and re-use them?
(Special thanks to Susan Jacobs for this month's tip.)



S.P.I.C.E.

Programs are on the 1st & 3rd Mondays. Lunch is available for \$7.

Monday, October 4th, 11:00 am, Luski Hall

Rabbi Judy – “Welcoming the Stranger & the Changing Faces of Charlotte.” Lunch is at 12:00 pm, RSVP required by Thursday, September 30th. Program: Tom Hanchett, Levine Museum of the New South: “Changing Places; Changing Faces”

Monday, October 18th, 10:00 am, Blumenthal Entrance parking lot for carpooling. Program: Daniel Stowe Gardens. Cost: \$20 per person, which includes admission, lunch and docent. RSVP required by October 11th.

Monday, November 1st, 11:00 am, Luski Hall

Rabbi Judy – “Is There Holy War in Judaism?” Lunch is at 12:00 pm, RSVP required by Thursday, October 28th. Program: Marshall Lindner – “Terrorism & Jihadist Ideology”

Please email Sera Callif, srcallif@aol.com, if your address, phone number or email address has changed within the past six months.

Pre-payment is required via check or credit card to confirm your lunch and/or program. No extra lunches will be ordered. Lunch reservations for in-house meetings can be cancelled without penalty up to 48 hours prior to the event. RSVP to www.beth-el.com/rsvp or 704-749-3070. Any questions or concerns? Please contact Leon Rutman at l.rutman@earthlink.net or 704-499-5919. *S.P.I.C.E programming is made possible through a generous grant from the BJH Foundation for Senior Services.*

TEMPLE BETH EL BROTHERHOOD NEWS

Brotherhood 3rd Thursday Social Night

Join us the Third Thursday of every month when Brotherhood members get together for good food, drink, conversation and fellowship at a local tavern. Each month we'll plan to meet at a different location to equal the travel time for those attending from month to month. No reservations required.

Save these dates of our future social nights:

2010 - Sep 16th, Oct 21st, Nov 18th, Dec 16th

2011 - Jan 20th, Feb 17th, Mar 17th, Apr 21st, May 19th, Jun 16th

Sites of future socials:

- Brazwell's Premium Pub, 1627 Montford Drive (704) 523-3500
- Chilis The Arboretum, 8136 Providence Road (704) 541-8799

- Hickory Tavern (2 locations)

Ballantyne: 12210 Copper Way Suite #212 (704) 295-9009
Providence Road: 11504 Providence Road (704) 847-4408

Brotherhood Membership Requirement Changes

In order to be more inclusive the Brotherhood has changed its membership requirements. We not only accept Jewish males who are Temple members, but we are also delighted to accept non-Jewish male Temple members and Jewish males who are not Temple members.

If you would like to join the Brotherhood or have questions please contact: Barry Ezarsky, bezarsky@hotmail.com, or Jonathan Howard, jmh40@aol.com.

SISTERHOOD MEMBERSHIP DINNER

Sunday, November 7th, 5:00 - 7:30 pm, Luski Hall

We start the new year of Torah with B'reshit - Genesis - Creation. What do you create? We welcome Sisterhood members to share your talents, creations or interests with other women at our Membership Dinner Sunday, November 7th, 5:00 - 7:30 pm in Luski Hall.

Bring an appetizer, salad or dessert to share. Membership (\$36*) may be paid at the door. RSVP to Corine at cbockenek@gmail.com or call 704-338-9020 with your talent and food contribution.

*A portion of member dollars goes directly to our TBE religious school scholarships and national WRJ to support Reform Rabbinical students, Youth programs and Women and Children in Israel.

KESHET: INCLUSION SHABBAT 2010

Jewish and Gay: Telling our Stories

On October 1st at the 8:00 pm service, Keshet will sponsor its Inclusion Shabbat, this year exploring the inclusion of gays and lesbians in the Jewish community. Members of our own community will tell their stories. Please join us for a celebration of identity and of living life to its fullest.

We also look forward to seeing you at Pride Charlotte, October 2nd. Temple Beth El's table will be staffed from 1:00 pm to 5:00 pm. And, we invite you to join Keshet on Tuesday, October 12th, from 6:00 to 8:00 pm at Charlotte's LGBT Community Center (820 Hamilton St., Charlotte, NC 28206). CMPD Chief of Police Rodney Monroe will participate in an Open Forum in conjunction with Meck-PAC and HRC (Human Rights Campaign). This is an opportunity to talk with Chief Monroe and share concerns with CMPD on LGBTQ issues.

MESSAGE FROM LIBERTY PRESIDENT JESSIE TOTTEN



LIBERTY and NFTY are two phenomenal youth groups dedicated to creating a comfortable, fun environment for Jewish teens.

Through my experience at LIBERTY events and regional kallot (conventions) over the past four years, I have had some really incredible moments. I have performed a lot of meaningful community service that has really impacted who I am today. I have sat in services where the music spoke to me so intensely that I couldn't help but stand up and dance. I have participated in mixers where I was pushed out of my comfort zone but came out closer with everyone I met. I have discussed different issues pertinent to today's society, learned how they relate to Jewish values and created my own stance on them. I have met some of the most unique, creative, caring, passionate, confident and fun individuals in the entire world.

LIBERTY and NFTY not only provide you with the opportunity to learn about yourself and deepen your connection to Judaism and God, but they also give life-long friends, really fun programs and experiences you'll never forget.

I hope to see you there!

Jessie Totten
totten235@aol.com

LIBERTY

LIBERTY Saves the World (8th-12th graders)

Saturday, October 16th, 1:15 - 3:30 pm @ Sugar Creek Wastewater Treatment Plant (5301 Closeburn Road, Charlotte, NC 28210)

Interested in saving the world? Ready to make a difference with a crowd of your Jewish best friends? This is your chance! LIBERTY will visit the Sugar Creek Wastewater Treatment Plant (inside Park Road Park) to learn how we affect the environment. Join us for an interactive tour and the opportunity to change the world!

Meet and pick up at the Wastewater Treatment Facility. Pay online or RSVP to libertycvp@gmail.com. Cost: \$4.00

(all proceeds go to Camp Jenny and Water Treatment Facility). Light snacks and beverages will be provided.

COLLEGE CONNECTION

If you are interested in attending the College of Charleston (CofC), there is a Prospective Student Weekend on October 15th-17th. Contact Mimi Lewis (Jewish Student Life Coordinator) at the Hillel/Jewish Student Union at (843) 953-3917 or jsuhillel@gmail.com if you would like to visit and participate in the weekend program.

COMMUNITY TEEN LEADERSHIP EXCHANGE PROGRAM IN ISRAEL AND THE US – SUMMER 2011!

Hey all you 9th, 10th, and 11th graders, save the date for next summer's AMAZING Charlotte teen trip to Israel. Spend July 2011 running all over Israel for two weeks with Israeli teens from our sister city of Hadera; then continue the party when we bring them back home to Charlotte for two more weeks of leadership, social action, and a LOT of fun!

Discover your Jewish past, learn about the Jewish present, and build for the Jewish future. This is an amazing, once-in-a-lifetime opportunity to create great friendships with American and Israeli teens, develop your leadership skills, and explore Jewish pluralism.

This trip is a community effort, organized by the Jewish Federation of Greater Charlotte's Partnership 2000 program, Temple Beth El, Temple Israel and the Consolidated Hebrew High School. All are welcome and encouraged to participate.

Mark your calendars! For more information, talk to Rabbi Streiffer, Rabbi Cantor, Roz Cooper at Hebrew High, or Sarah Kaplan at the Federation.

YOM KIPPUR FOOD DRIVE WAS A HUGE SUCCESS!

Thanks to LIBERTY for coordinating and all contributors for donating, our congregation collected a whopping **2,796 pounds of food** for the Second Harvest Food Drive. This will feed a family of 4 for 399 meals, or provide 1,596 individual meals.

**2010 SADIE LEVIN SCHOLAR-IN-RESIDENCE
SHABBATON**

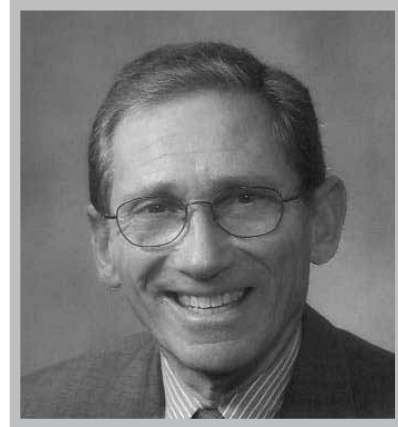
Save the Date!!

Friday, November 19th - Saturday, November 20th
Sadie Levin Scholar-in-Residence Shabbaton
with Rabbi Emeritus Jerry Davidson of Temple Beth El,
Great Neck, NY

Please join us for this meaningful Shabbaton featuring our special guest speaker, Rabbi Jerry Davidson. Rabbi Davidson will be able to share his experience, knowledge and vision on Social Justice and Action. Together we will explore rabbinic teachings on social justice, how they should be implemented and where we should be as a congregation in terms of Social Justice and Action.

Rabbi Davidson served as a Senior Rabbi of Temple Beth El in Great Neck, NY, for 35 years. He serves on the faculty of the Hebrew Union College-Jewish Institute of Religion, of which he is both president of the Rabbinic Alumni Association and member of the Board of Governors. In 1994, Rabbi Davidson was chosen by the New York Board of Rabbis as "Rabbi of the Year," the first Reform rabbi to receive this award.

This special Scholar Shabbaton also marks the tenth yahrzeit of Rabbi Judy Schindler's father, Rabbi Alexander Schindler. At our Friday evening service, Rabbi Davidson will reflect on Rabbi Alexander Schindler's leadership



Jerry Davidson to speak at TBE's 2010 Sadie Levin Scholar-in-Residence Shabbaton, November 19-20.

as the President of our Reform Movement for more than two decades and whether we have fulfilled the vision he articulated for us.

The Sadie Levin Shabbaton will include a Friday evening sermon, Saturday morning workshop, Saturday D'var Torah and informal Havdalah and discussion.

"Go beyond the expected" best describes the philosophy of caterers Shane & Lori Pearson. Shane, a graduate and instructor of Johnson & Wales along with his wife Lori has over 15 years experience in First Class Design and event coordination ranging from luncheons of 20 people, chef for hire, in-home events, themed events, weddings, life cycle events to celebrity events for thousands. Next time you are at Temple Beth El, please stop by the kitchen and introduce yourself to Lori Pearson.

Discounts given when multiple weekend events are booked.



"Go beyond the expected"

For more information, please contact Lori at Temple Beth El
(704) 749-3058 or (803) 493-8329
loripearsonhome@yahoo.com

ANDREW MOFFA
Parashat B'reishit
October 2, 2010



Andrew is the son of Richard and Robyn Moffa. His grandparents are Alfred and the late Reva Barnard of Bronx, NY, and the late Carole Moffa of Bethpage, NY. Andrew is the brother of Rebecca.

ZACHARY TENKIN
Parashat Vayeira
October 23, 2010



Zachary is the son of Chris and Sue Tenkin. His grandparents are Robert and Bonnie Reingold of Fort Mill, SC, and Barry and Jackie Tenkin of Hilton Head, SC. Zachary is the brother of Alexandra.

AARON HOUGUI
Parashat Noach
October 9, 2010



Aaron is the son of Kenneth and Sherril Hougui. His grandparents are Paul and Judy Sacks of Queens, NY; Bertha Hougui and the late William Hougui of Rockland County, NY; and the late Arlene Sacks.

JUSTIN TRAPANI
Parashat Noach
October 9, 2010



Justin is the son of Lori and Paul Trapani. His grandparents are Nyra Horowitz and the late Alvin Horowitz of Boynton Beach, FL, and Constance Trapani and the late Salvatore Trapani of Rockville, MD. Justin is the brother of Lindsay.

AMOS IRVING SEPKOWITZ
Parashat Vayeira
October 23, 2010



Amos is the son of Mary Lynn and Warren Sepkowitz. His grandparents are Bill and Gretchen Carroll of Beaufort, SC, and the late Sam Sepkowitz and the late Enid Tucker Sepkowitz. Amos is the brother of Isabel and Emma.

ATTENTION SIXTH GRADE FAMILIES:

Save the Date for Temple Beth El's Annual Sixth Grade B'nei Mitzvah Retreat

**Friday, October 29th
6:45 pm - 10:30 pm**

**Saturday, October 30th
8:45 am - 2:00 pm**

Information will be e-mailed to all of our sixth grade families. If you do not receive an e-mail, please contact B'nei Mitzvah Coordinator Holly Gainsboro at 704-749-3052 OR hgainsboro@beth-el.com.

LEARN MORE ABOUT OUR B'NEI MITZVAH STUDENTS...

Go to www.beth-el.com/b_neimitzvahstudents.html to read about their mitzvah projects and more. Students will be posted for three weeks: one week prior to, the week of, and the week after their b'nei mitzvah.

PULL & POST CALENDAR

OCTOBER 2010

SUNDAY	MONDAY	TUESDAY	WEDNESDAY	THURSDAY	FRIDAY	SATURDAY
<p>03</p> <p>NFTY SAR FALL KALLAH</p> <p>8:30 am Religious School</p> <p>1:30 pm LIBERTY Board Meeting</p> <p>3:00 pm Farber Leadership Opening Session</p> <p>5:00 pm Interfaith Dialogue with St. Peters Catholic Church</p> <p>7:00 pm B'nei Mitzvah Tutoring</p>	<p>04</p> <p>HEBREW SCHOOL</p> <p>11:00 am SPICE Program</p> <p>7:00 pm Interfaith and Outreach Committee</p>	<p>05</p> <p>4:15 pm B'nei Mitzvah Tutoring</p>	<p>06</p> <p>HEBREW SCHOOL</p> <p>6:45 pm Anshei Mitzvah</p> <p>7:00 pm Hebrew High School</p> <p>8:00 pm Beth El Confirmation Class</p>	<p>07</p> <p>5:00 pm Comparative Religion Committee</p>	<p>08</p> <p>10:15 am Torah Yoga</p> <p>6:00 pm TGIS: Greet Shabbat with Psalms</p> <p>8:00 pm Shabbat Worship Service</p>	<p>09</p> <p>9:15 am Tot Shabbat</p> <p>9:30 am Tanach Study</p> <p>Fiji</p> <p>11:00 am B'nei Mitzvah Aaron Hougui/Justin Trapani</p>
<p>10</p> <p>RELIGIOUS SCHOOL</p> <p>7:00 pm B'nei Mitzvah</p>	<p>11</p> <p>HEBREW SCHOOL</p> <p>11:00 am SPICE Committee</p>	<p>12</p> <p>4:15 pm B'nei Mitzvah Tutoring</p>	<p>13</p> <p>HEBREW SCHOOL</p> <p>6:00 pm Beth-El/Myers Park</p>	<p>14</p>	<p>15</p> <p>10:15 am Torah Yogah</p> <p>6:00 pm TGIS: Summer Style</p>	<p>16</p> <p>9:00 am Congregational Shabbat Morning Experiences</p> <p>Robyn Farber Leadership Workshop: Our</p>

Tutoring	7:00 pm Personnel Committee Meeting 7:30 pm Youth Activities Committee Ritual Committee	Dialogue Teen Vocal Ensemble Rehearsal 6:45 pm Anshei Mitzvah 7:00 pm Hebrew High School 8:00 pm Beth El Confirmation Class	8:00 pm Shabbat Worship Service	Ancestors on the Couch Fiji 7th Grade Sheva Teen Band Rehearsal 10:00 am Teen Vocal Ensemble 10:15 am Congregational Shabbat Breakfast 11:00 am Congregational Shabbat Service
----------	---	--	------------------------------------	---

17	RELIGIOUS SCHOOL 10:00 am Brotherhood Breakfast 1:30 pm LIBERTY Board Meeting 7:00 pm B'nei Mitzvah Tutoring	18	HEBREW SCHOOL 11:00 am SPICE Program 6:30 pm Brotherhood Meeting 7:00 pm Sisterhood Meeting	19	4:15 pm B'nei Mitzvah Tutoring 6:30 pm Jewish Community Business Circle	20	HEBREW SCHOOL 6:00 pm Ways and Means 6:45 pm Anshei Mitzvah 7:00 pm Hebrew High School Member Services Committee 8:00 pm Beth El Confirmation Class	21	22	10:15 am Torah Yoga 6:00 pm TGIs: Greet Shabbat with Psalms 8:00 pm Shabbat Worship Service	23	9:30 am Tanach Study Fiji 11:00 am B'nei Mitzvah Zachary Tenkin/Amos Sepkowitz
----	--	----	---	----	--	----	---	----	----	--	----	---

24	RELIGIOUS SCHOOL 7:00 pm B'nei Mitzvah Tutoring RELIGIOUS SCHOOL 1:30 pm LIBERTY Board Mtg. 7:00 pm B'nei Mitzvah Tutoring	25	HEBREW SCHOOL 12:00 pm Senior Sage Class 7:30 pm Adult Education Committee	26	4:15 pm B'nei Mitzvah Tutoring	27	HEBREW SCHOOL 6:45 pm Anshei Mitzvah 7:00 pm Hebrew High School 8:00 pm Beth El Confirmation Class	28	10:15 am Torah Yoga 6:00 pm TGIs: Greet Shabbat with Psalms 6:30 pm B'nei Mitzvah Retreat 7:15 pm Service of Healing & Comfort 8:00 pm Shabbat Worship Service	29	10:15 am Torah Yoga 6:00 pm TGIs: Greet Shabbat with Psalms 6:30 pm B'nei Mitzvah Retreat 7:15 pm Service of Healing & Comfort 8:00 pm Shabbat Worship Service	30	8:45 am B'nei Mitzvah Retreat 9:30 am Tanach Study Fiji 11:00 am B'nei Mitzvah Retreat Service
----	---	----	--	----	-----------------------------------	----	--	----	---	----	---	----	--

TURN YOUR GOLD INTO GELT!!

Calling all congregants! Gold prices are at an all time high nearing \$1,300 per ounce! This is the perfect opportunity to cash in and help the religious school at the same time. Chanukah is early this year so we are bringing SouthPark Jewelers back to turn your gold into gelt. Get top dollar for all your broken, old and unwanted gold, silver or platinum jewelry or objects. SouthPark Jewelers will hand you a check on the spot and make a contribution from their profit to the school. It's an early Chanukah present for all! Cashing in your gold for gelt will benefit the school and give you some added income to get ready for the holidays. Gold sale will take place on November 14th in the Bernstein Education Building (Religious School) lobby from 8:30 am-1:00 pm. The entire congregation is encouraged to support the school and take home some extra cash!

TEMPLE TOTS

Tot Shabbat - October 9, 2010, 9:15 am, Gorelick Hall.

Please join the Temple Beth El Tots for Tot Shabbat - a short, musical, informal service and a Simchat Torah activity targeted to preschool-aged children and younger.

Tot Shabbat provides a fun-filled way for our parents to introduce their children to Jewish traditions and connect with other families within the Temple Beth El community.

If it is your first time at a Temple Tots event, contact us in advance or let our door greeters know, and we'll have a committee member meet you at the event and introduce you to the other participating families.
Contact: tots@beth-el.com or 704-366-1948.

CHARLOTTE JEWISH PRESCHOOL'S NEW GREEN TEAM

By Meg McLendon



Sukkot is a favorite holiday among our families. The mitzvah that requires families to eat, sleep, study and play outside is a fun and easy way to connect with the nature. Making the connection with nature and God's creations are an important goal that we strive to achieve with our students and families. "Going green" is on many people's minds these days and at Charlotte Jewish Preschool, we

have a new "Green Team" in place to put our eco-friendly ideas into action. Our team is made up of parents, CJP administrators and staff, as well as community leaders. And, it's not just about reducing, reusing and recycling at school. It's also about inspiring CJP families to put these green practices into use at home and in their neighborhood.

Teaching children the importance of the 3Rs (reducing, reusing and recycling) must be a team effort. By working together at home and at school, our children will gain important and early lessons about our impact on the planet. It's just another way the Charlotte Jewish Preschool is helping students learn about the world around them and how their choices affect it.

Come join CJP's Green Team! Learn. Grow. Connect. with our staff and families at the Charlotte Jewish Preschool. For further information on how to enroll your child into our wonderful world of learning, please contact Alyson Kalik at 704-944-6866 or akalik@shalomcharlotte.org.



Youth Director/Assistant Director of Education Andy Harkavy dresses up as Winnie the Jew and passes out hundreds of honey sticks to children on Rosh Hashanah.

JCRC FALL LECTURE

Save the date! Thursday, November 18, 2010, 7:00 pm
Sam Lerner Center for Cultural Arts at Shalom Park

The Jewish Federation Community Relations Council (JCRC) will hold its Fall Lecture featuring Bret Stephens, Deputy Editorial Page Editor of *The Wall Street Journal*. For more information, please contact the Federation office at 704-944-6757.

JEWISH FEDERATION HONORS MEMBERS OF THE SILVER CIRCLE SOCIETY

The Jewish Federation will honor its Silver Circle Society members on Monday, October 18th at a private dinner at Temple Israel chaired by Aleen and David Epstein.

The event will feature Faces of Aliyah speakers Katya Minakova and Orit Tabay, olim who will tell their personal stories to provide a broad picture of how the Federation supports the resettlement of Israeli immigrants.

Members of the Silver Circle Society are donors who have contributed to the Jewish Federation Annual Campaign for 25 years or more. New members of our community who have contributed to other federations for 25 years or more are eligible to attend. If you have not already received an invitation, please contact the Federation office at 704-944-6761.

CUB AND BOY SCOUTING AT SHALOM PARK

Cub Scouting at Shalom Park is a fun filled child-parent activity for boys in grades 1-5. Cubs participate in Pinewood Derby races, crafts, fishing, family camping, nature study, games, special trips, service projects, and more. This values based program is fun for the entire family. Unlike many church based units, our Pack is ecumenical in nature. Also, we are planning to reintroduce a Boy Scout Troop for grades 6 through 9. For more information call David Lintz at 704-451-4411.

THE CHARLOTTE AREA JEWISH COMMUNITY DIRECTORY 2010

Blue Sheets are on the way to your mail box! Please fill yours in and return it by November 1st. Haddassah volunteers have published the directory for more than 60 years as a community service and as a way to raise much needed funds for medical research. Our directory reflects the whole Charlotte Jewish community, as well as the businesses and professionals who are part of and serve our growing "family" here in Charlotte. Any member of the Charlotte area Jewish community can have a free listing- we never charge for the basic listing of your name, address and telephone number. New to Charlotte-

get in the directory and you can be found.

Extra blue sheets will be available at the JCC front desk or on www.charlottehaddassah.org. Want to advertise? Contact Ivy Saul at isaul@carolina.rr.com (please put Haddassah in the subject line) Other questions? Call Tess Berger at 704-708-4857.

BECOME A 'LOVE AND LOGIC'® PARENT

Presented by Wendy Petricoff, Facilitator for Love and Logic. Creating Happy Families and Responsible Kids. Learn simple skills that take the exhaustion out of raising great kids. Have you ever thought, "There has to be a better way to parent"? Well, there is...Learn to be a Love and Logic Parent!

These sessions will focus on preschool and young elementary school age children. Tuesdays, October 5th, 12th, 19th and 26th, 7:00-9:00 pm, OR Tuesdays, November 2nd, 9th, 16th and 30th, 9:30-11:30 am at the Levine-Sklut Judaic Library and Resource Center, 5007 Providence Road, Suite 107. Cost: \$85 per family, which includes a workbook and all materials. Contact JFS to register at info@jfscharlotte.org, 704-364-6594, or visit our www.jfscharlotte.org for more information.

HEBREW CEMETERY

The Hebrew Cemetery works to guarantee a holy and sanctified resting place for our community members. Contact Cemetery Director Sandra Goldman at 704-576-1859, 704-944-6854 or director@hebrewcemetery.org to arrange for a private tour of the cemetery or for more information about donations, membership benefits, graves, prepaid funeral costs, endowments and/or including the cemetery in your estate planning. Visit the cemetery website at <http://www.hebrewcemetery.org>.

THE FLORENCE MELTON ADULT MINI-SCHOOL IS COMING TO THE LEVIN-SKLUT JUDAIC LIBRARY

Join us to gain a profound understanding of what it means to be Jewish as we explore the texts of our tradition and engage in discussion that investigate issues of Jewish thought, practice, ethics and history. Our interactive, pluralistic classroom environment is designed for adults at all levels of knowledge and practice.

Classes start in October, Thursday nights 7:00-9:30 pm. For more information, call 704-944-6763.

JEWISH COMMUNITY BUSINESS CIRCLE

Meets on the third Tuesday of each month with a guest speaker discussing a topic of interest to our business community. Meetings are held at 6:30 pm in Luski Hall.

SHARING OUR LIVES

OUR CONDOLENCES . . .

The Board of Directors of Temple Beth El and the entire congregation extend their deepest sympathies to the families of:

- ... Matthew Naphtali, father of Shari Goldberg
- ... Irving Handelsman, father of Neil Handelsman
- ... Rabbi Larry Jackofsky, who served as Rabbi of Temple Beth El from 1974 to 1976 and was longtime Director of the URJ Southwest Council.
- ... Ruth Kleinman, mother of Joan Kirschner, grandmother of Steven Kirschner
- ... Robert Raitt, Step-Father of Mike Ferry
- ... Margaret Schwartz, mother of Larry Schwartz
- ... Charles Sonneborn, step-father of Steven Garfinkle
- ... Harold Spivock, father of Robin Spivock and Sheri Spivock
- ... Barney Timmons, father of Janie Levinson
- ... Sara Weiner, aunt of Bonnie Borresen
- ... Allan Wolf, husband of Nora Wolf

MAZEL TOV to:

Weddings

- ... Ivy Littman and Adam Berman on September 5, 2010.

Births

- ... Brenda and Albert Kaplan on the birth of their daughter, Alaina Rose Kaplan, on August 30, 2010.
- ... Susie and Randy Kurstin on the birth of their daughter, Rebekah Kathryn Kurstin, on September 11, 2010.
- ... Shelley and Larry Leibman on the birth of their grandson, Aiden Meier Leibman, on September 22, 2010. Proud parents are Tammy and Matthew Leibman.

MILESTONE BIRTHDAYS & ANNIVERSARIES

OCTOBER BIRTHDAYS

- 1 - Deborah Moore
- 7 - Judy Feldman
- 11 - Jerry Rittenberg
Stacey Stolar
- 14 - Beverly Tirsun
Daniel Uri
- 19 - Linda Gordon
Ross Feldman
Kelly Schwartz
- 21 - Albert Taras
Nora Chandler
Kelly Collins
- 23 - Eric Osansky
- 30 - Renee Goozner

OCTOBER ANNIVERSARIES

- 40 TH - James and Lynda White
Michael and Iline Goldfischer
- 30 TH - Kenneth and Lynn Sass
- 25TH - Mark and Roberta Malton
- 20TH - Richard and Charlotte Halperin
Jordan and Judy Poler
Daniel Uri and Iris Cheng
- 10TH - Jeffrey and Pamela Cohen
Stewart and Wendy Warne

FUNDS

Contributions to funds shall be considered income to the Temple and shall be used on an as needed or annual basis for the purposes set forth in the creation of the fund. These funds may be considered income for budget purposes.

CHILDREN & YOUTH

Angel Fund

Provides funds through the Social Action Committee to help mothers provide basic needs for their children.

Cojac-Mintz Summer Camp Fund

Provides scholarship assistance for youth attending Reform Jewish summer camps

In honor of:

Al & Roni Mintz

Evie & Stan Garnet

Estelle Gold Children's Fund

Provides for miscellaneous needs of Temple youth programs

Scott Katowitz Youth Scholarship Fund

Provides scholarships for NFTY activities and UAHC camps

A donation by:

Sharon & Lee Keene

Youth Activities Fund

Provides for Youth programs, activities and events

EDUCATION

Arthur Tirsun Education Shabbat & Religious School Fund

Provides for the Annual Education Shabbat and other Religious School programs

Love and blessings to:

Leslie Imholt

Susan & Donald Jacobs

In honor of:

Amanda Rittenberg's graduation

Elizabeth Fagan's graduation

Jonathan Gale's Bar Mitzvah

Susan & Donald Jacobs

In memory of:

Irma Rubin

Steve & Linda Lepow

Herbert Abroms

Susan & Donald Jacobs

Barney Timmons

Lynne & Stuart Cojac

Bregman-Wallace Book Fund

Provides for the purchase of books and education materials

Confirmation Class Scholarship Fund

Interfaith & Outreach Fund

Provides for programs for interfaith families and education for individuals on the path to conversion.

viduals on the path to conversion.

In memory of:

Evelyn Spielman

Louise & Mark Bernstein

Michael Martin

Susan & Samuel Lewis

Judy Perlin Scholarship Fund

Provides scholarships to Religious School; administered by the Sisterhood

In memory of:

Joan Lepow

Jodi & Greg Valenstein

RELIGIOUS & RITUAL

Ann Seigel Bereavement Fund

Provides for the needs of the bereaved in our community

A donation by:

Jacob Greenblatt

Brandon Greenblatt

Hand in Hand Fund

Provides large print Braille prayerbooks for the visually impaired or blind, provides sign language interpreters for the deaf, and enables us to make physical adaptations to the facility to better serve the physically disabled

In memory of:

Etta Goldberg

Lenore Marx

High Holy Day Fund

Provides for High Holy Day expenses such as mailings and expenses incurred in moving books and supplies to the church

MAZON PRESENTATION



Have you ever wondered what happens to our donations to MAZON: A Jewish Response to Hunger? Rabbi Schindler recently presented two grants on behalf of MAZON, each of \$7,000, to Second Harvest Food Bank and Jewish Family Services. Thanks to all who have contributed!

Norman Steinberger Yizkor Fund

Provides for the publication of Yizkor memorial books and maintenance of the Memorial Boards

In memory of:

Patti Deaton
Charles Lacallade
Leola Jacobson

Pepper Music Fund

Provides for Temple music programs and the Temple Beth El Choir

Resnik-Gold Prayerbook Fund

Provides for the purchase of prayerbooks for Temple Beth El

Ritual Fund

Provides for the purchase and maintenance of ritual objects

In appreciation of:

Rabbi Judy
Shelley Pawlyk

Solomon Schwartz Torah Fund

Provides for repair of Temple Torahs

Susan Kramer Healing Fund

Provides materials for healing and spirituality

In honor of:

Karen Wolff
Stephanie & George DiPaolo

In memory of:

Margaret Lewith
Rinky Cardoza
Irma Rubin
Marjorie & Don DuBroff
Robert Stickler
Marsha, Lucy & Robert Stickler

ADULTS

Peggy & Joe Grifenhagen Older Adult Services Fund

Provides for older adults services

A donation to SPICE by:

Charlotte & Howard Weisblat

Speedy recovery wishes to:

Milt Poler
Faylinda & Marshall Lindner

In honor of:

The marriage of Phil & Beth Warshauer
Faylinda & Marshall Lindner

In memory of:

Neal Szatmary
Cooki & Stanley Uhr
Sue & Larry Savett
Evelyn Zhiss
Robert Newman
Bill & Gloria Grifenhagen

Robyn Farber Leadership Development Fund

Provides for training and motivating future leaders of our temple

Social Justice & Action Fund

Provides for Social Justice & Action programs

Thanks to the generosity of Paul and Sondra Hopmeir, Lee and Jane Diamond, John David Kling and the funds the Board of Directors approved, we now have more than \$25,000 of the \$30,000 needed to repair all our Torahs.

To contribute, send your donations to the Solomon Schwartz Torah Fund at Temple.

In memory of:

Harold Emery
Brian & Marla Emery

GENERAL

Brotherhood Fund

Building Fund

Provides for general building improvements

In memory of:

Jacob Davis
Arlene & Gary Davis

Capital Campaign Fund

Contributions to our "It's Our Turn Capital & Endowment Campaign"

In honor of:

The marriage of Phil & Beth Warshauer
Lee & Alan Blumenthal

In memory of:

Lillian Zhiss
Kenneth LaRowe
Lee & Alan Blumenthal
Margaret Lewith
Anne & Bob Yudell
Matthew Naphtali
Linda Ziefert

General Fund – pass through to budget

Supplements Temple operating expenses

A donation by:

Joecephus Dacus
Speedy recovery wishes to:
Milt Poler
Carol Ritter

In memory of:

Robert Levenson
Helen Levenson
Robert Levenson Jr
Simon Kornblit
Linda Greenfield
Ellen Bottner
Charles Korach
Sophia Novell
Kent Novell
Robert Newmann
Barbara & Bob Bernhardt
Isabelle Vatz
Jane Abel
Arnie Reider
Audrey Capozzoli



From LIBERTY to a baseball game, Pizza in the Hut and an Edible Sukkah Decorating Contest, Youth activities are off to a great start this year!



Jessie Simon
Marcelle & Allan Oxman
Julie Clarkson
 Mary Jane Silverman
 Mary Ann Lam
Gene & Janie Meyers
 Lillian Schorr
Jean Finkelstein
 Sue Opper
Nancy Novell
 Gloria Cohen Ershler
Jeff Cohen & Judy Seldin-Cohen
 Gordon Wahls
Liz Wahls
 Lillian Borgenicht
Jack & Alison Levinson
 Ed Festinger
Lynda White
 Kenneth LaRowe
Ethel & Allen Gordon
 Irene Price
Jane Liberty
 Dora Garfinkle
Phil Garfinkle
 Rose Farkas
Ken Rothmel
 Neal Zatmary
Ray Fales

Sisterhood Oneg Shabbat Fund

Provides for the Oneg on Shabbat evenings
In memory of:
 Joel Tigler
 Pauline Tigler
Jane Tigler

ENDOWMENTS – BUILDING FOR OUR FUTURE

The income generated from the Endowments shall be considered as income of the Temple and shall be spent or accumulated as determined by the Temple's Endowment Committee.

Principal Endowment

Provides money for ongoing financial security of Temple Beth El

Consolidated High School Scholarship Endowment Fund

David Cohen Family Social Justice & Action Endowment

Support and implement social justice and action programs

Donna S. & Norman Levin Family Endowment for Education

In memory of:
 Donna Levin
Thelma & Bob Levine

Fred & Vi Winton High Holy Day Music Endowment

Provides music for the High Holy Days

Joe & Carol Voynow Building Maintenance Endowment

Provides for capital improvements to the building

Marian Segal Bennett Musical Arts Endowment

Provides for special programs of Jewish Music

David Silverman Youth Activities Endowment

Provides for youth programming

In honor of:

Sydney Newman's Bat Mitzvah
 Parker Musler's Bar Mitzvah
Matty & Marc Silverman

Michelle Miller Jewish Commitment Endowment

Provides the Michelle Miller Award for Jewish Commitment of a Confirmation Student

In memory of:

Michelle Miller
Joy & Fred Miller
 David Brown
Audrey & Irving Miller

S.A. Schloss Special Book Endowment

Provides Torah commentaries for Sanctuary

Sadie W. Levin Scholar-in-Residence Endowment

Provides for Scholar-in-Residence speakers and adult education

In memory of:

Donna Levin
Ross & Nance Levin

Sisterhood Children's Fund

Funds generated from this endowment fund will be used to aid and provide scholarships for temple-sponsored children's programs

Sonny Melasky Nursery Endowment

Provides babysitting service and nursery improvements

DISCRETIONARY FUNDS

The rabbis and cantors act as agents of the synagogue in disbursing funds from their discretionary funds.

Rabbis' Discretionary Funds

Provides scholarships, Tzedakah contributions, direct assistance, books, materials and Temple programs

A donation by:

Susan & Donald Jacobs
Gabrielle & Joshua Braverman
Marcy Smith
Shelley Pawlyk

In appreciation of:

Rabbi Judy
 Rabbi Micah
Shelley Pawlyk
Judy Szatmary
Shelley & Larry Leibman
Jeff Cohen
Nathalie & Ira Malter
Lynne Cojac & family
Adrienne & Allen Magid

In honor of:

The B'not Mitzvah for Lauren & Lindsay Label
Joyce & Stanley Label
 Allen Rivlin
Ellie Miller
 David Michael Berman
Kathleen & Adam Berman

In memory of:

Neal Szatmary

Judy, Pete, & Julia Slade
 Irene Silver
Beverly & Irving Greenberg
 Rachel Weiman
Shimon Weiman
 Lillian Zhiss
Harriett & Martin Hurlich
Helene Rivlin
 Solomon Goldstein
Mollie & Howard Braverman
 Jessie Simon
Marcia & Paul Simon
Elizabeth & Walter Klein
Steven Hockfield
Emily & Sam Zimmern
 Sam & Ida Poler
Milt Poler
 Katelynn Harper Hampton
Fran & Don Russ & family
 Joan Lepow
Janie & Gene Meyers
 Harry Shapack
Ruth Shapack
 Solomon Shlar
 Estelle Rothkopf
 Jacob Sosnowitz
Joyce & Michael Proscia
 Irving Davis
Ruth & Stephen Davis
 Irving Sadow
Mark Sadow
 Rose Callif
Sera & Marvin Callif
 Charles Rutman
Leon Rutman
 Antonio Darienzo
Beverly Darienzo
 Abe Dworsky
Jill & Randy LeClair
 Matthew Naphtali
Renie & Don Fernbach
Helene & Allen Rivlin
 Robert Gromet
Phyllis Schultz & Matt Gromet

Cantor's Discretionary Fund

Provides scholarships, Tzedakah contributions, direct assistance, books and materials and Temple programs

In honor of:

Cantor Bernard
Judy Szatmary & family
Nathalie & Ira Malter

In memory of:

John McManus
 Clyde Williams
John & Peggy McManus
 Jeanne Levy
Honey Kridel & family

The Executive Director acts as an agent of the synagogue in disbursing funds from this discretionary fund for unanticipated Temple needs.

Executive Director's Discretionary Fund

Provides for unanticipated Temple needs

In honor of:

Sara Schreibman
Judy Szatmary & family

PASS THROUGH FUNDS

Contributions to the Birkat Shalom Fund, Crisis Assistance Ministry Fund and Mazon are sent directly to these agencies on behalf of Temple Beth El.

Birkat Shalom Fund

Provides direct donations to our sister congregation Birkat Shalom in Israel.

Crisis Assistance Ministry Fund

Provides direct donations by Temple Beth El to Crisis Assistance Ministry

In memory of:

Morris Notrica
 Peter Kushakow
Claire Notrica
 Ben Schwartz
Bill Schwartz
 Jessie Simon
Dannye & Lew Powell

Mazon: A Jewish Response To Hunger

Provides direct donations to Mazon by Temple Beth El

Happy New Year Wishes to:

Rabbi & Mrs. Mort Kaplan
 Mr. & Mrs. Howard Guld
Helen, Joel & Cindy Josephs

In memory of:

Mac Josephs
Helen Josephs
 Sam & Ida Poler
Milt Poler

MY HOW WE'VE GROWN

As we prepare to move into our new space at Temple Beth El, it's a good time to reflect on just how much we've grown since our last temple dedication in 1992.

We've grown from 300+ families to 1100+ families... from 20+ bnei mitzvah students to 65-70 students annually... from a staff that included just one Rabbi, one part-time Cantorial Soloist, one part-time Religious School Director and one Receptionist to our current (extraordinary) clergy/staff of more than 18 people. We've added adult education programs for every interest and youth groups for children of all ages. We now have 30 teachers educating 475 children in our religious school and more than 150 active members in the senior S.P.I.C.E. group.

Truly "bursting at the seams" and desperately needing more space and flexibility to accommodate our growing family, we embarked on an ambitious journey. At the start of that journey 18 months ago, we stressed that Temple Beth El is more than just bricks and mortar. What makes Temple Beth El a special place is the people and the sense of community we create together. As we wandered through the halls of Shalom Park in our temporary location, that community feeling flourished. Nevertheless, there's no place like home – a new and beautiful building where we can now better serve the needs of all congregants.

**SAVE THE DATES!
FEBRUARY 11-13TH, 2010**

Friday, February 11th, Shabbat Worship, 7:00 pm
Join us as we joyously celebrate Shabbat and "move our mishkan" to the new sanctuary.

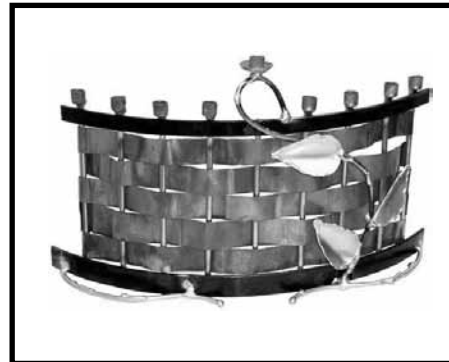
Saturday, February 12th, Cocktail Party and Taste of Temple Beth El, 7:00 pm
Join us as we celebrate our new building and everyone who made it possible.

Sunday, February 13th, Scavenger Hunt, 10:30 am and 1:00 pm
Religious School Children and families enjoy a scavenger hunt throughout the new building.

LEAVE YOUR HARD HATS AT HOME - TAKE AN ONLINE TOUR OF THE CONSTRUCTION!

Virtual tours of the building construction are now available at www.beth-el.com/construction.

**DISCOVERED TRADITIONS
GIFT SHOP**



Gifts for birthdays, Chanukah, brides, babies and more! Featuring artists from Israel and home decor.

YELLOW DOT SALE

We're making room for Chanukah merchandise, so beginning October 1st, come in and receive 30% off of all items marked with a yellow dot!



FALL HOURS

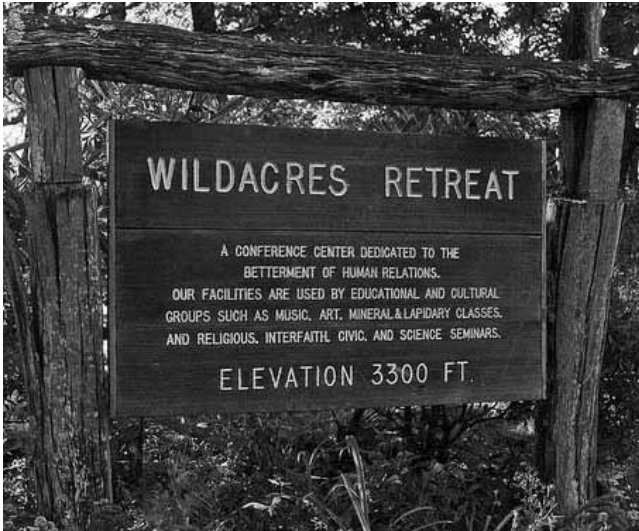
Mon. - Fri. 10:00 am - 3:00 pm
Sun 8:30 am - 1:00 pm during religious school
Fridays 7:00 - 8:00 pm
and before 6:00 pm by request only.

For your convenience, shop online!
bethel.judaicabeautiful.com

WILDACRES 2010

More than eighty congregants spent Labor Day weekend at Wildacres. From spiritual services overlooking the Blue Ridge Mountains to Karaoke night, we made new friends and enjoyed great fun.

Photos © 2010 David E. Powers.



*Exclusively at
Karat Patch
Jewelry*

'Shema Yisrael'
שמע ישראל

"Hear, O Israel: the Lord is our G-d, the Lord is One"

KARAT PATCH
JEWELRY
901 Providence Road
704-334-3188
www.karatpatch.com

Become a Fan

**Check out what's
NEW in Fitness!**

- Personal Training Services
- Pilates Training
- Yoga & Core Barre Training
- Massage & Spa Services

**Levine
JCC**
Charlotte

704-366-5007 • www.charlottejcc.org

WORK WITH A LEADER IN CHARLOTTE REAL ESTATE



Executive Realty

704 926-2544 office
704 975-8500 cell
www.LepowRealtors.com



ArtShots PHOTOGRAPHY



B'NEI MITZVAHS WEDDINGS PORTRAITURE & DESIGN
ARTSHOTSPHOTO.COM ARTSHOTSPHOTO@GMAIL.COM

Phil's Deli

Strawberry Hill



Kosher & Kosher Style
"A Charlotte Tradition!"

Featuring:
 Eat In Dining
 Take Out Deli Platters

Catering for:
 Bar & Bat Mitzvahs
 Bris & Baby Namings

Hours:
 Monday 7am-3pm
 Tuesday 7am-3pm
 Wednesday 7am-3pm
 Thursday 7am-3pm
 Friday 7am-3pm
 Saturday 8am-3pm
 Sunday 8am-2pm

Serving Full Breakfasts & Lunch 7 Days a Week



WADDELL & REED
 Financial Advisors™

Providing

PERSONAL FINANCIAL PLANNING

Investing. With a plan.®

For more than 70 years

Waddell & Reed, Inc.

Member SIPC



Jennifer Sperry, CFP(R)
 Financial Advisor
 5950 Fairview Rd.
 Suite 200
 Charlotte, NC 28210
 (704) 553-7220 x 127
jsperry@wradvisors.com

8985 (06/09)

Everlasting Memories Photography and Video

828-631-0848



"Memories to last a Lifetime"

“Harvey's role is one of a savvy business partner committed to my success. Revenues are up; I'm working smarter and clients are happily extending their contracts.”



Marcia Merrill, President,
Red Rover Communications
www.RedRoverCommunications.com



Harvey Smith

 CarolinaBusinessCoach.com
704.604.1655

Mention this ad and Vintner Wine Market will donate 10% of your non-sale purchase to Temple Beth El



8128 Providence Road, Ste. 500
704-543-9909
www.vintnerwinemarketnc.com

■ HAS YOUR CONTACT INFORMATION CHANGED?

Please help us keep our databases current. Send your updated phone number, email, mailing address, etc. to Pam Linker in the Temple office today: plinker@beth-el.com or 704-749-3056.

Don't miss out on any of the exciting programs and opportunities that Temple Beth El has to offer!



■ LEARN TO READ HEBREW... CLASSES BEGIN IN NOVEMBER

Learning to read Hebrew is a great way to become more connected to services and prayers. Temple Beth El is offering a thorough beginning Hebrew class that will give you the opportunity to learn to decode and read Hebrew. Members and non-members are welcome. The class fee includes all materials. Classes will meet on Wednesday nights from 7:00 to 8:00 pm in the Bernstein Education building on the third floor. You can register online at www.beth-el.com/rsvp. Classes begin November 10, 2010.

Class schedule: Nov. 10, 17; Dec. 1, 8, 15; Jan. 5, 12, 26; Feb. 2, 9, 16, 23

Class Fee: \$90 Members, \$105 Non-members

Minimum of 6 students required



Essex Street Deli Restaurant

8430 Rea Rd., Suite 100
 Robinson Farms Shopping Ctr.
 980-207-0885
 essexstreetdeli@gmail.com

The Real Deal N.Y. Style Deli

Featuring our Mile High Corned Beef and Pastrami Sandwiches, Potato Latkas, Matzo Ball Soup, Derma & Kasha Varnishkes, Our Famous Homemade Stuffed Cabbage, "like mama makes."

WITH THIS COUPON

Receive 10% OFF Purchase
 Buy One Pound of N.Y. Butter Cookies
 Get 1/2 lb. FREE

Cannot combine with any other offer. Expires 10-31-2010



RSVP

Looking For Paper In All the Wrong Places!
 Come See The Finest Selection in Charlotte!

Personalized Stationery
 Wedding & Party Invitations
 Bar & Bat Mitzvah Invitations
 Birth Announcements
 Holiday Cards, Stickers, Pads
 And Much, Much, More!



Julie Lavitt
 (704) 849-6950
 7235 Governors Row
 Charlotte, NC 28277

Great Prices
 Great Selection

INVITING OCCASIONS



Temple Beth El thanks the Swimmer Insurance Agency

Harry Swimmer, David Swimmer,
 Craig Katzman and Brian Meltsner

for their support of the Charlotte Jewish community for over 57 years.

Your connection to the Jewish Community...



www.mattimovescharlotte.com

Whether cross town or across the country, let me be the Real Estate, agent to help you move into the home of your dreams.

I have a proven record of results since 1985 in assisting people buy and sell their homes.



Matti
 Ordan Reider
 Specializing In
 Service Since 1985!

Call for a personal relocation package! 704.849.6654 Office
 704.904.7250 Mobile

Experience • Knowledge • Service



5101 Providence Road
Charlotte, NC 28226
(704) 366-1948
www.beth-el.com



Non-Profit Organization
U.S. Postage Paid
Charlotte, NC

PERMIT # 1478

DATED MATERIAL
PLEASE DELIVER PROMPTLY
RETURN SERVICE REQUESTED

WORSHIP SERVICES - OCTOBER 2010

FRIDAY, OCTOBER 1

Thank God It's Shabbat (TGIS): Shabbat Band 6:00 pm
Inclusion Shabbat Worship Service 8:00 pm

SATURDAY, OCTOBER 2

Adult Tanach (Bible) Study 9:30 am
Bar Mitzvah: Andrew Moffa 11:00 am
Son of Richard and Robyn Moffa

FRIDAY, OCTOBER 8

TGIS: Greet Shabbat with Psalms 6:00 pm
Shabbat Worship Service 8:00 pm

SATURDAY, OCTOBER 9

Tot Shabbat 9:15 am
Adult Tanach (Bible) Study 9:30 am
B'nei Mitzvah: Aaron Hougui 11:00 am
Son of Kenneth and Sherril Hougui
Justin Trapani
Son of Paul and Lori Trapani

FRIDAY, OCTOBER 15

TGIS: Summer Style 6:00 pm
Shabbat Worship Service 8:00 pm

SATURDAY, OCTOBER 16

Adult Tanach (Bible) Study 9:00 am
Congregational Shabbat Experiences 9:00 am
Congregational Shabbat Brunch 10:15 am
Congregational Shabbat Service 11:00 am

FRIDAY, OCTOBER 22

TGIS: Greet Shabbat with Psalms 6:00 pm
Shabbat Worship Service 8:00 pm

SATURDAY, OCTOBER 23

Adult Tanach (Bible) Study 9:30 am
B'nei Mitzvah: Zachary Tenkin
Son of Chris and Susan Tenkin
Amos Sepkowitz
Son of Warren and Mary Lynn Sepkowitz

FRIDAY, OCTOBER 29

TGIS: Greet Shabbat with Psalms 6:00 pm
Service of Healing and Comfort 7:15 pm
Shabbat Worship Service 8:00 pm

SATURDAY, OCTOBER 30

Adult Tanach (Bible) Study 9:30 am
B'nei Mitzvah Retreat Service 11:00 am